

# Bio-Trim 4-1 Multi-Frequency Microcurrent

Delicate/Firm/Radiant/Smooth | Non-Invasive



**30 mins**  
*To be a hand model!*



**U.S. FDA  
CLEARED**



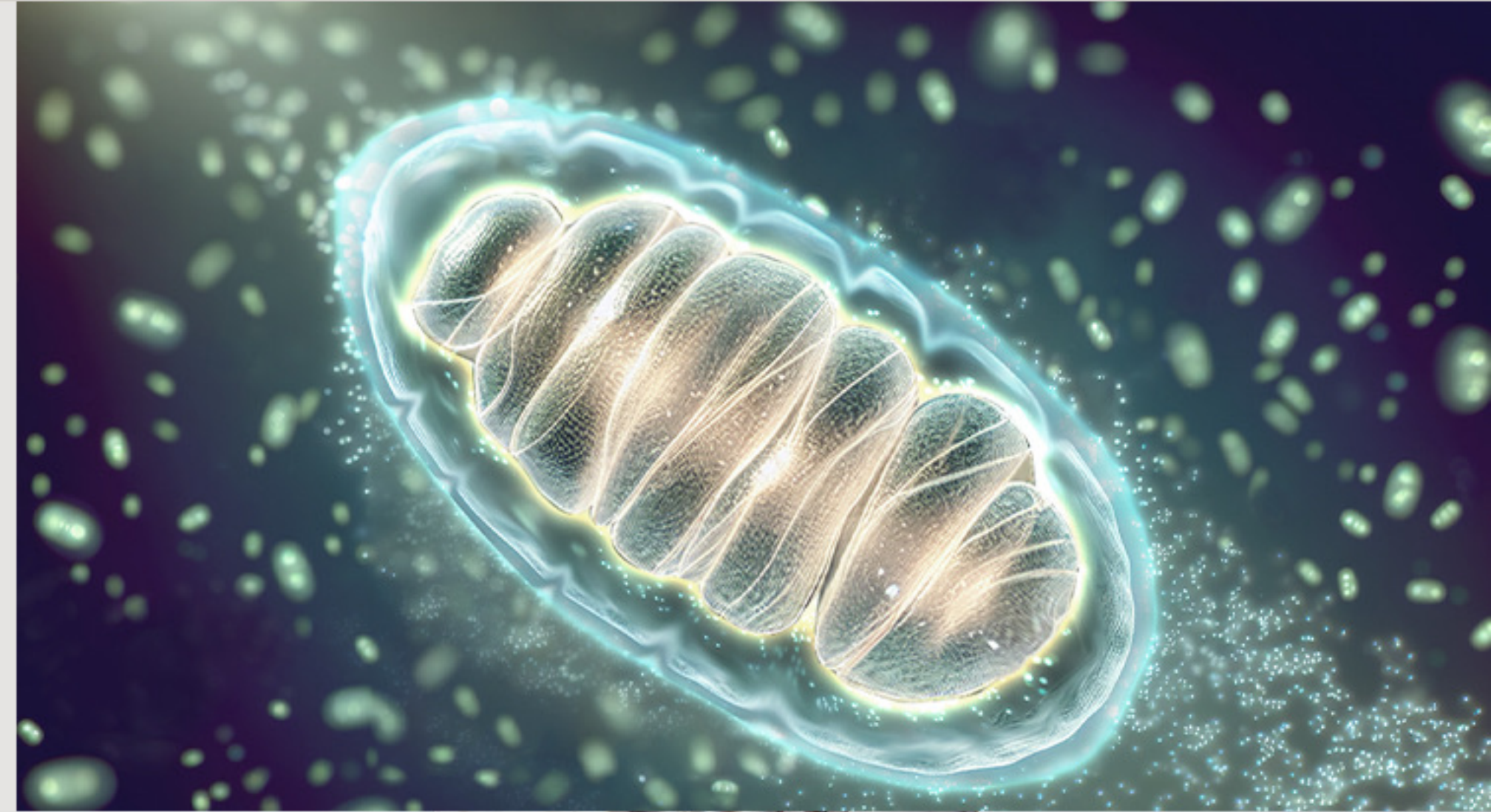
# Multi-Frequency Microcurrent Technology & Features

## UIC Series Products Simulate Human Bioelectricity

### 4 Main Programs

#### **PROG 1** Normalization (Hydration and Moisturizing for Vitality)

Using a multi-frequency microcurrent pulse sequence as an initial step, it replenishes the cellular energy, instantly activates cells, and helps them produce a large amount of ATP.



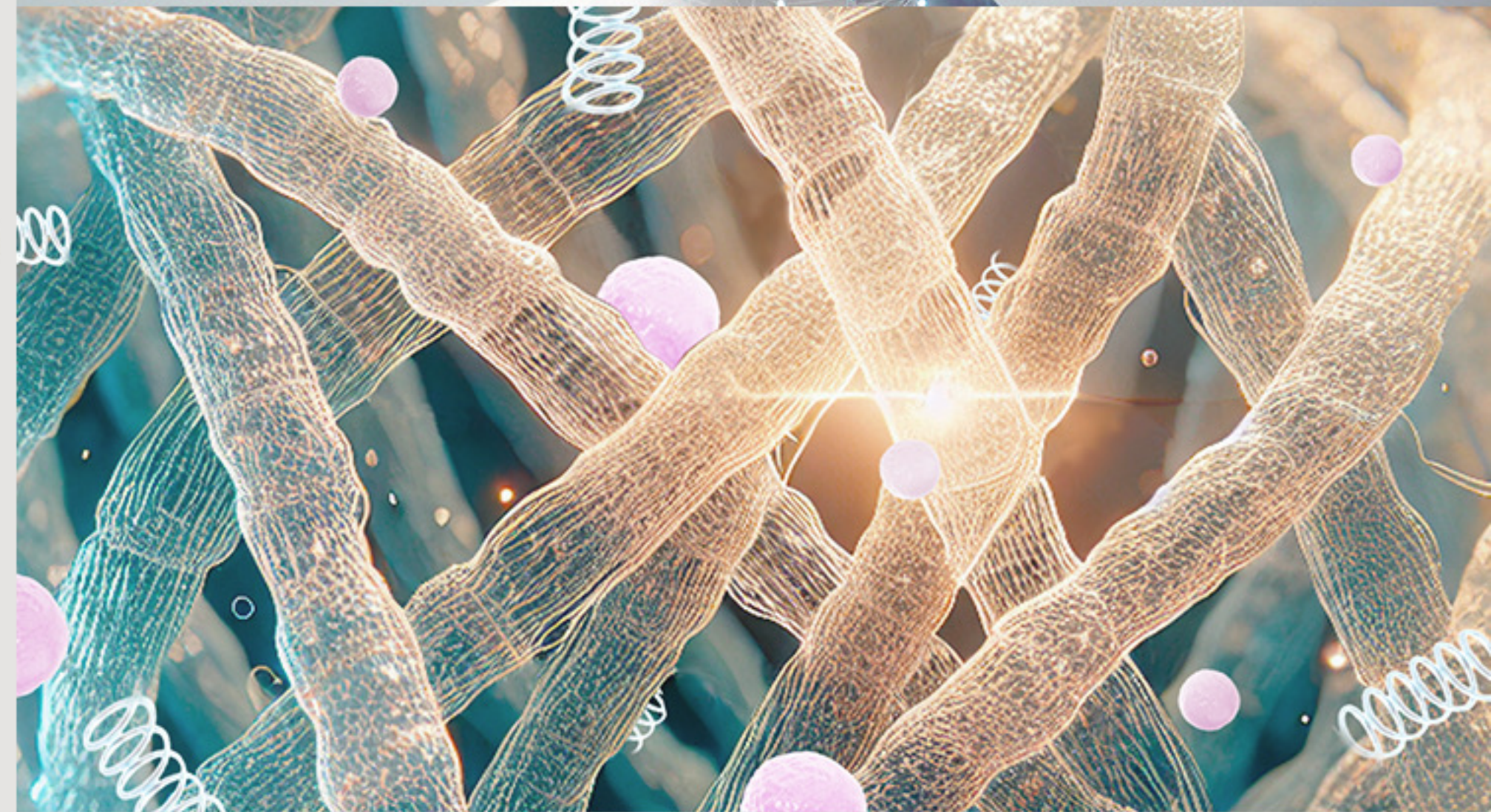
#### **PROG 2** Neuromuscular Re-Education (Lifting Facial/Breast Contours)

Simulating neural impulses emitted by the brain, it retrains neuromuscular functions to tighten and relax loose or contracted muscles, enhancing facial and breast contours.



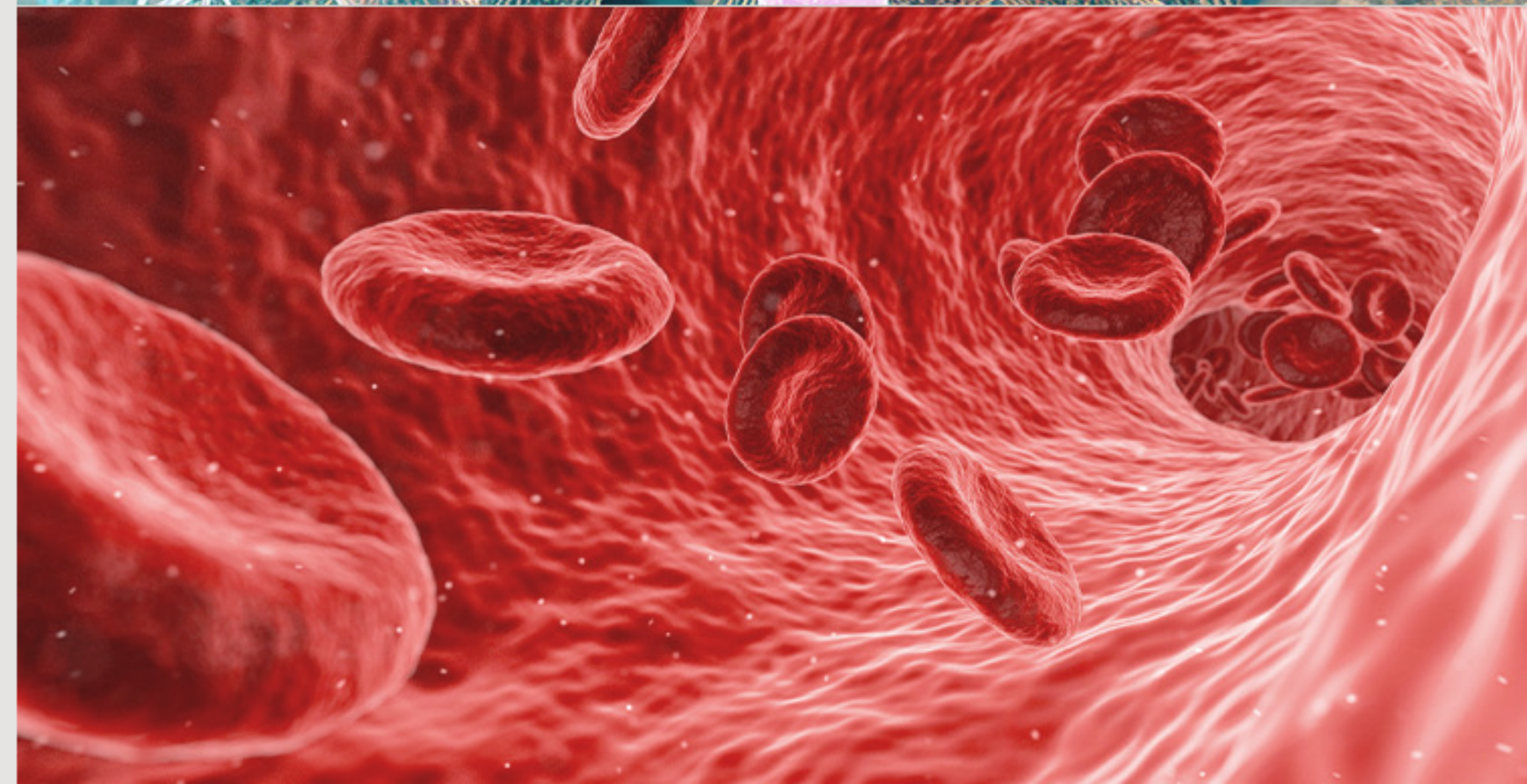
#### **PROG 3** Enhance Tissue Repair & Regeneration (Collagen/Elastin Regeneration)

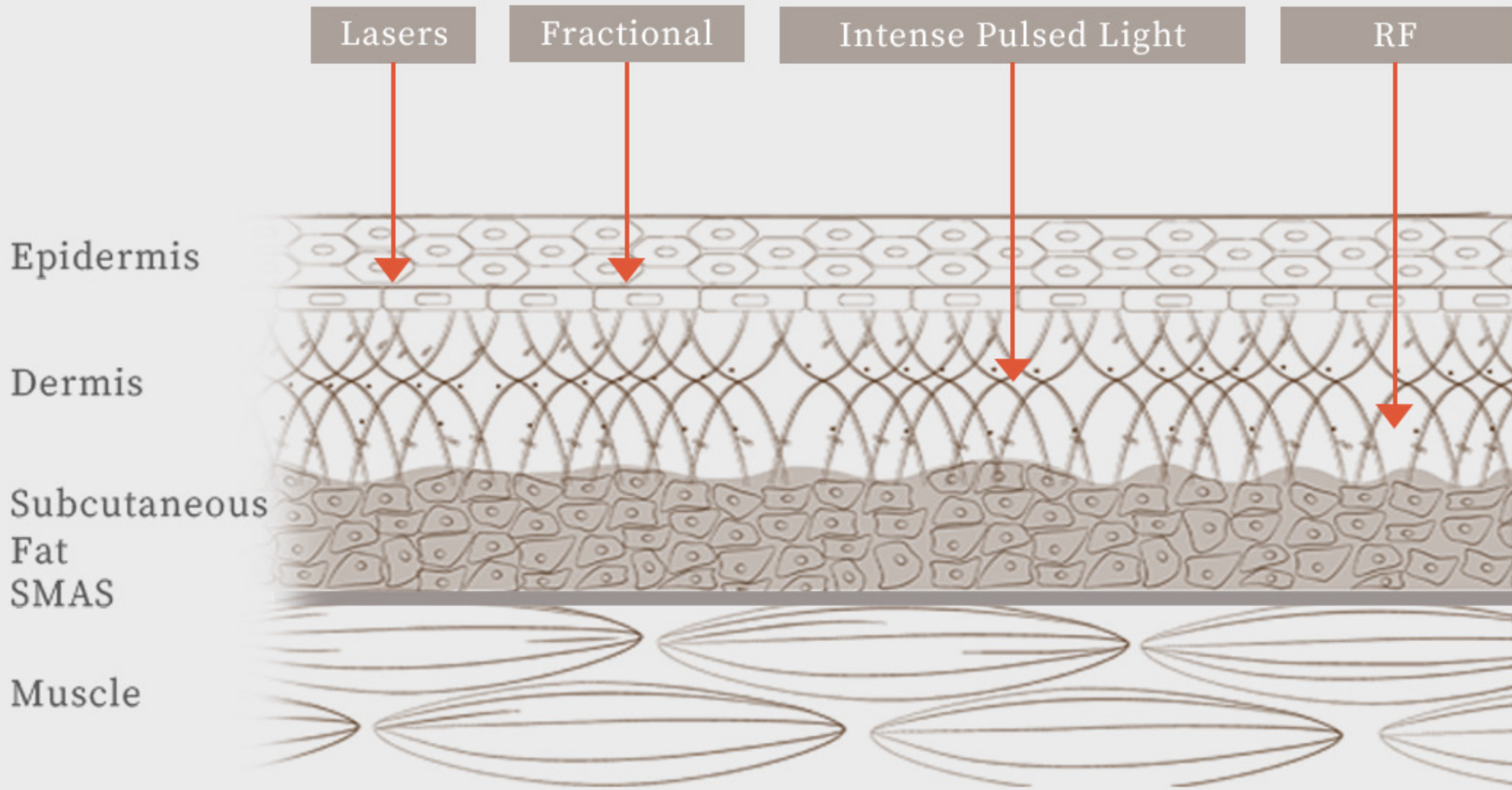
Assisting amino acids to enter cells, it synthesizes proteins needed for muscles, as well as collagen and elastin required for the skin.



#### **PROG 4** Circulation (Eliminating Edema/Restoring Radiance)

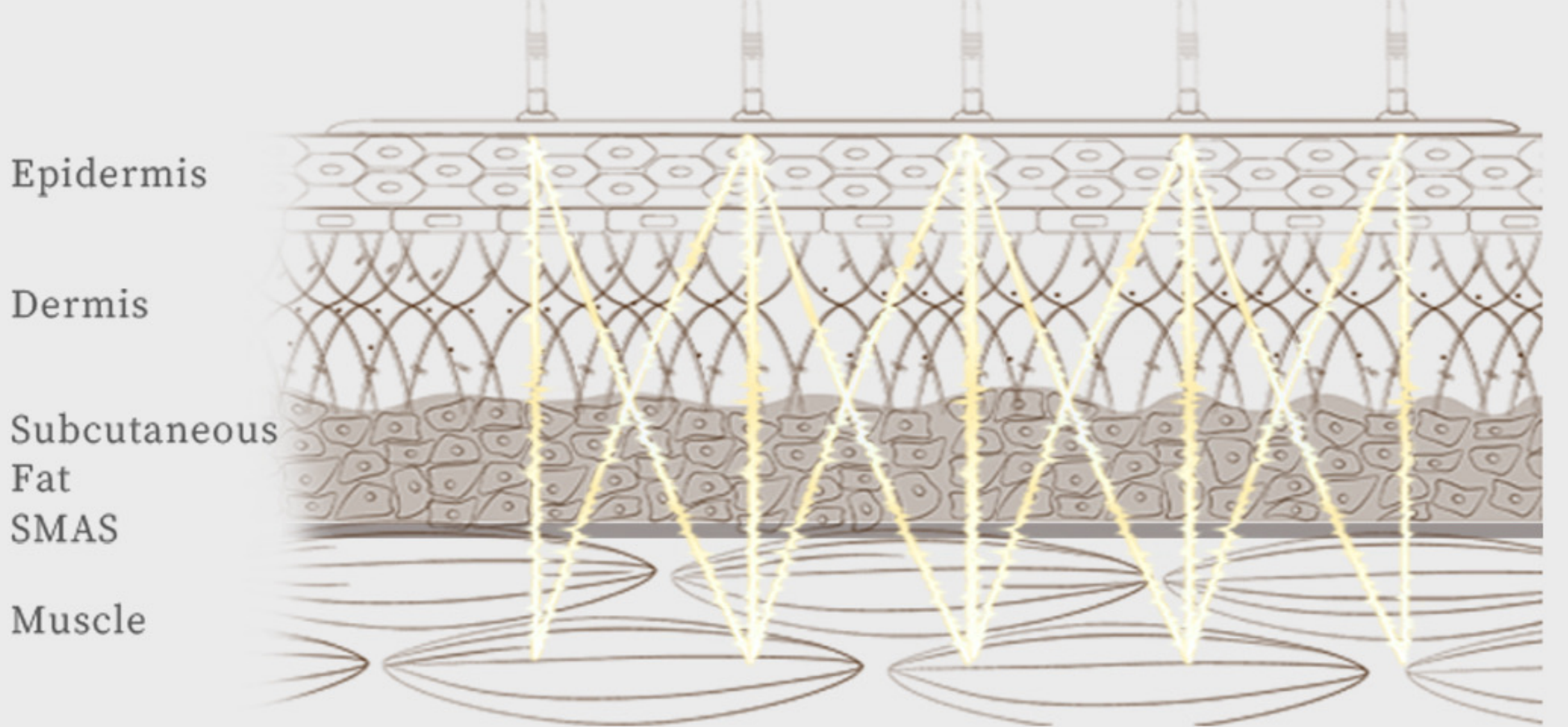
Ensuring tissue cells receive sufficient nutrients and oxygen, it accelerates lymphatic flow toward lymph nodes, clearing lymph accumulated in the lymphatic vessels.

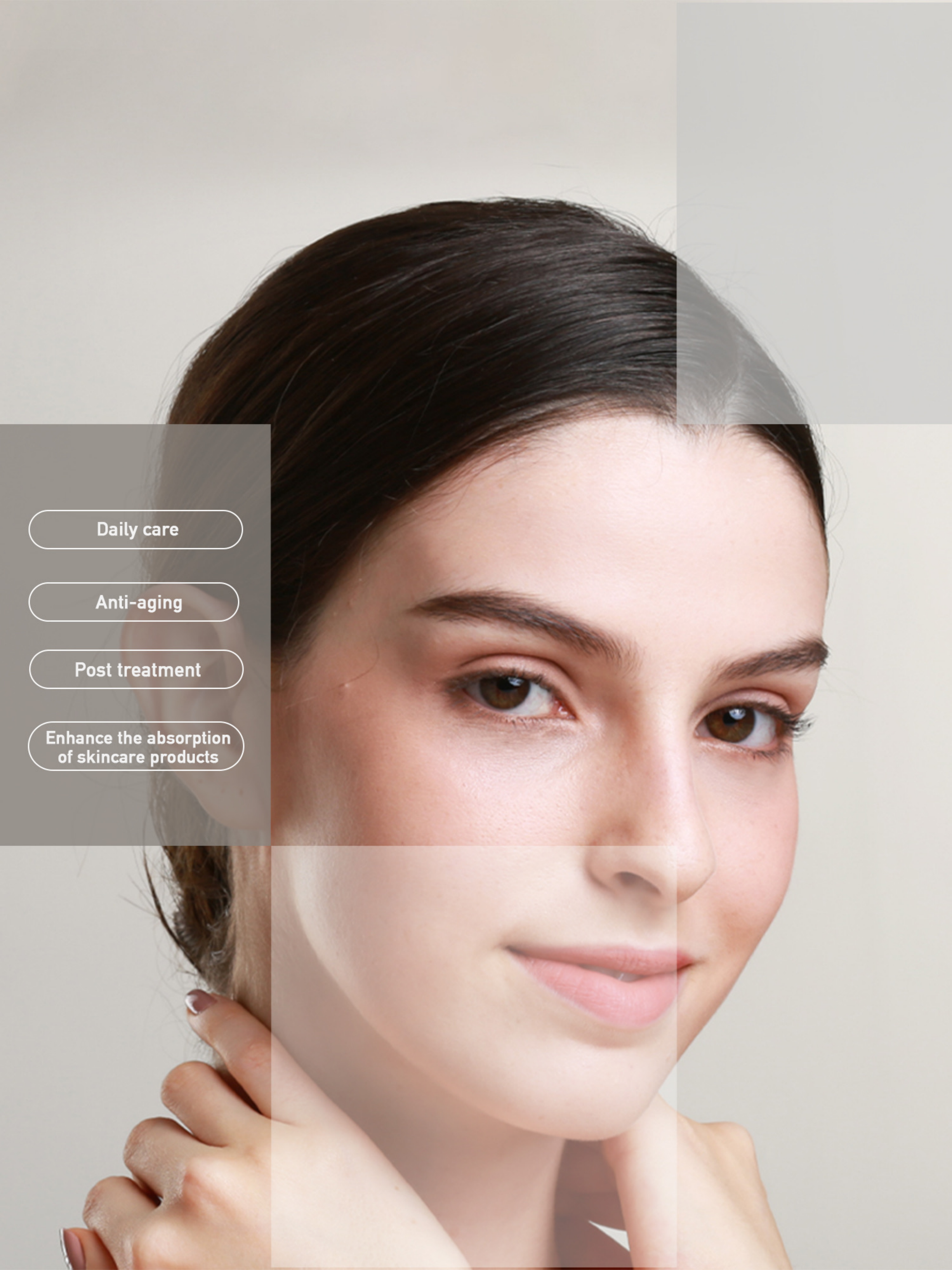




*Bio-Trim*

Multi-frequency Microcurrent





Daily care

Anti-aging

Post treatment

Enhance the absorption  
of skincare products

# Exclusive aesthetic mask

Different cells/levels/areas  
 Simultaneous synchronized precise anti-aging



- Frontalis
- Temporalis
- Corrugator supercilii
- Levator palpebrae superioris
- Orbicularis oculi

Forehead:  
 Fullness  
 Reduce forehead lines

Eyes:  
 Clear black-and-white contrast  
 Smooth eye creases  
 Eliminate puffiness



- Levator palpebrae superioris
- Zygomaticus minor & major
- Masseter
- Risorius
- Orbicularis oris
- Depressor labii inferioris
- Mentalis

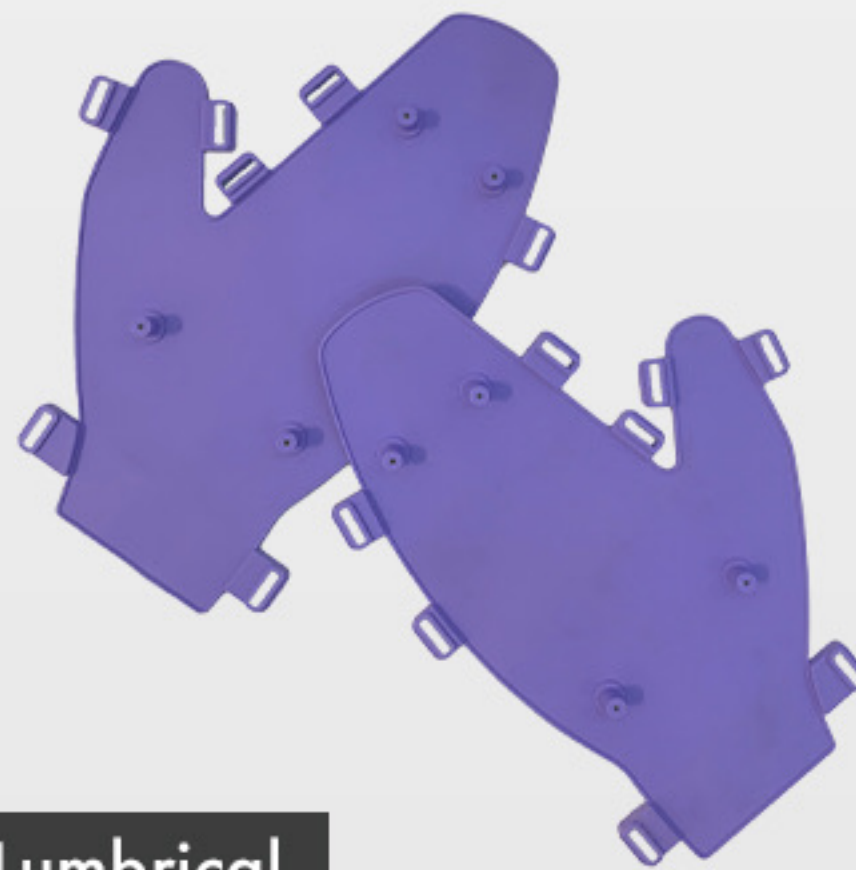
Cheeks:  
 Enhance facial smoothness  
 Improve blocky or uneven contours

Jawline:  
 Defined contours  
 Reduce lines around the mouth



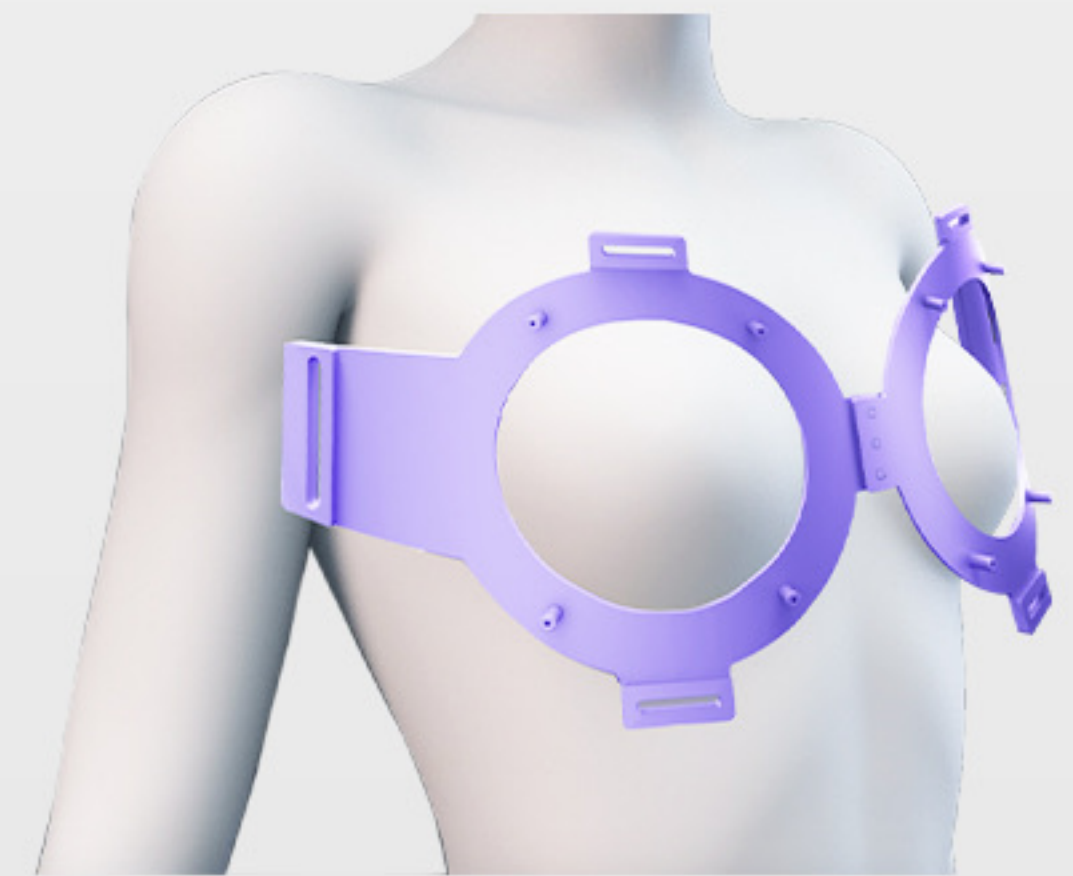
- Platysma
- Sternocleidomastoid

Neck:  
 Fade horizontal neck lines  
 Reduce neck circumference  
 Improve dry, wrinkled & creased skin



- Lumbrical
- Dorsal interossei

Hands:  
 Fade wrinkles  
 Smooth and soft texture  
 Improve sagging  
 Reduce finger circumference  
 Improve darkness around nail edges, joints & back of hands



- Pectoralis major

Breast:  
 Firm and lifted  
 Increase elasticity & collagen  
 Reduce wrinkles  
 Improve skin texture  
 Rounded & full

# Bio-Trim

NEW TODAY, BETTER TOMORROW



-  @bio-trim
-  @bio-trim
-  @bio\_\_trim



FOLLOW US

This information is for internal training use.